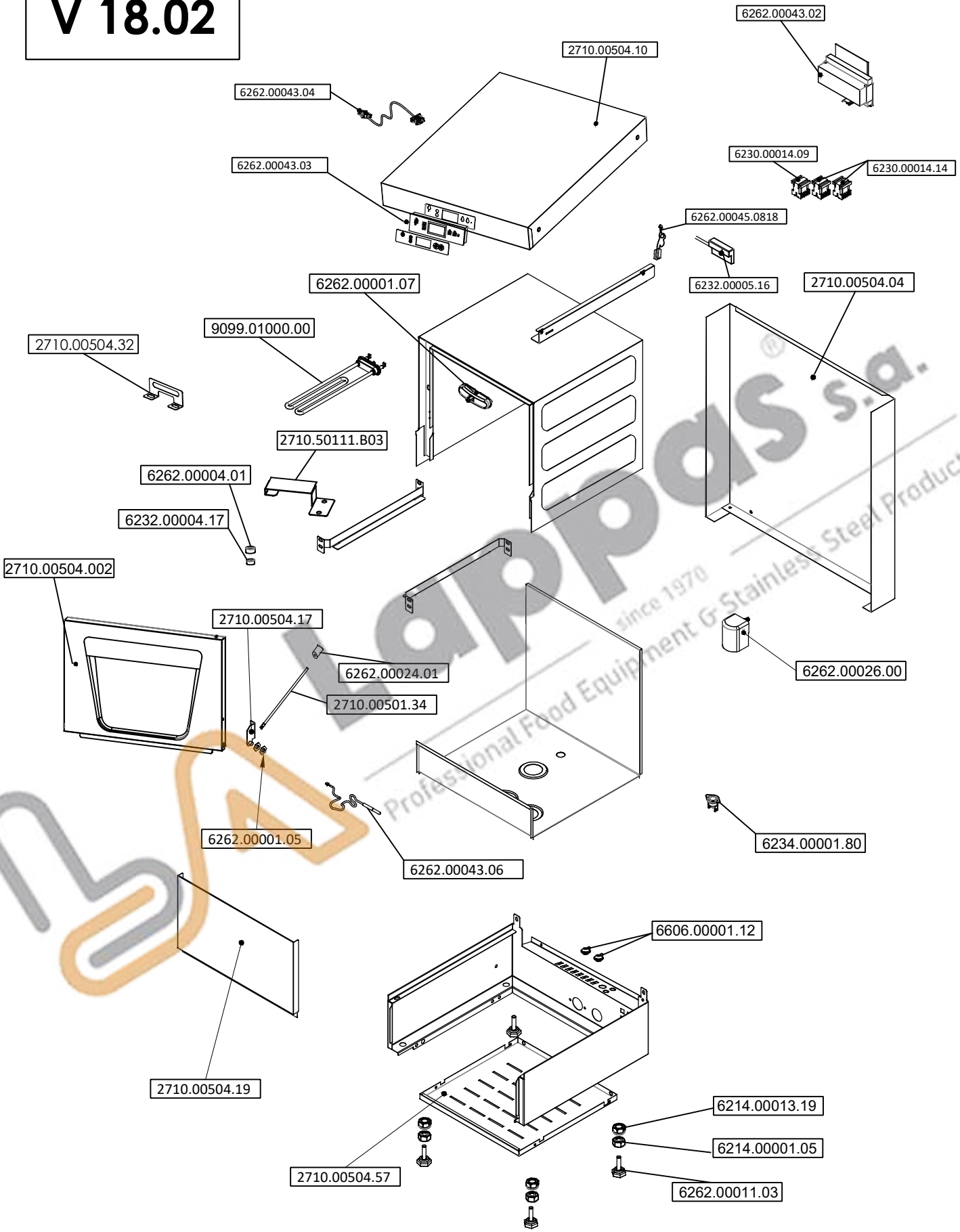


V 18.02



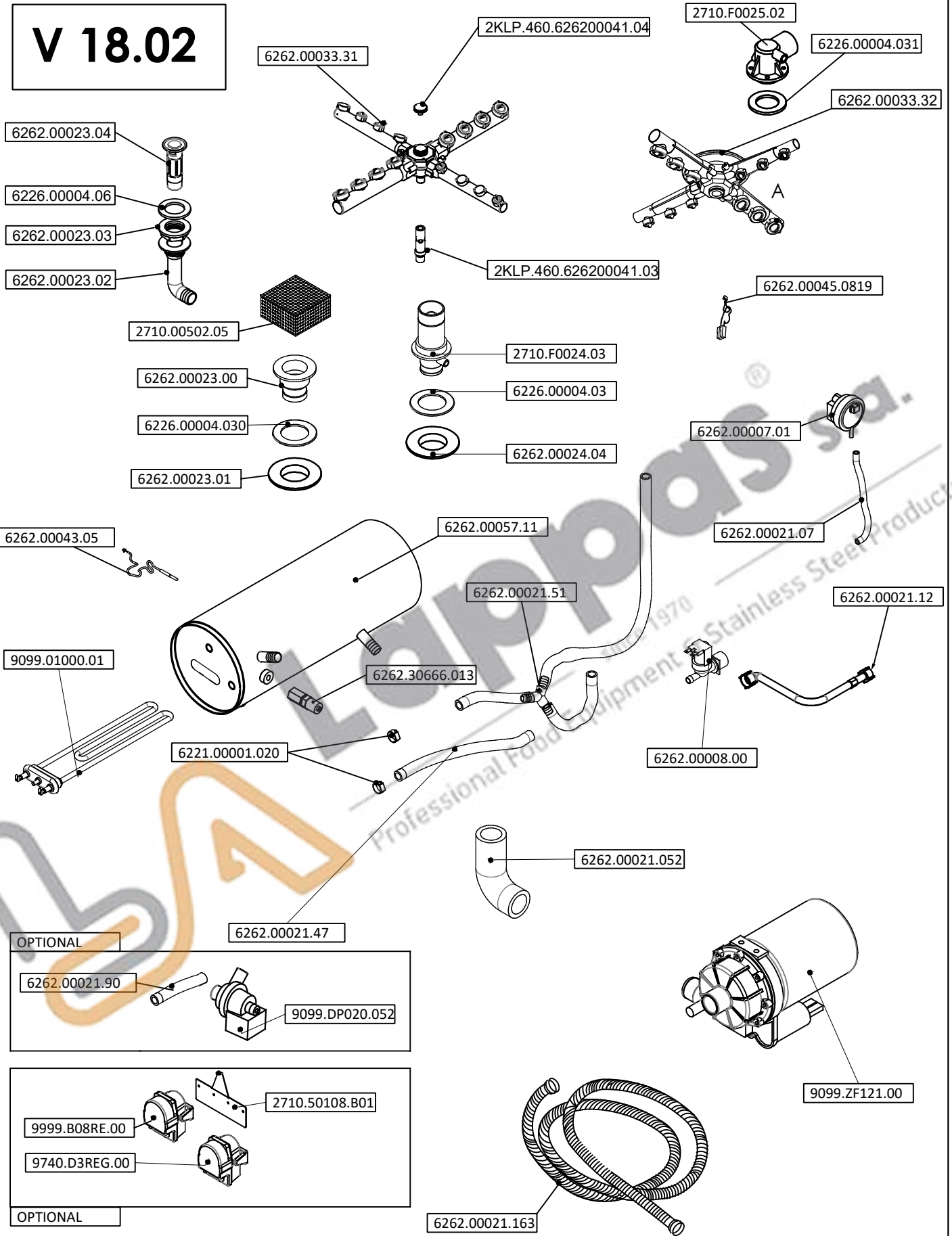
R&D	NAME	SIGNATURE	DATE	MATERIAL	VERSION NO		
DRAWING	S. GURCU		30.04.2019		V 18.02		
CONTROL	S. GURCU		30.04.2019				
CONSENT	M.HACI		30.04.2019	THICKNESS	REVISION	PART NAME: OBY 40D PDRT DIGITAL GLASSWASHER DETAILS EXPLODED VIEW	
		MEASUREMENTS MILLIMETER		WEIGHT (gr.)	SCALE	PIC. NO	

40D BODY GROUP ITEMS

Item Code	Designation
2710.00504.191	Top cover
2710.00504.002	Door Group
2710.00504.04	Back panel
2710.00504.19	Lower Front Panel
2710.00504.57	Bottom Panel
2710.00504.17	Door hinge
2710.00504.32	Resistance holding plate
6262.00001.07	Kit cover lock
6232.00004.17	Magnet
6262.00004.01	Magnet Cap
6262.00011.03	Adjustable feet
6214.00013.19	M10 nylon insert lock nut
6214.00001.05	M10 nut
6262.00026.00	Air Trap (plastic)
9099.01000.00	Tank heating resistance
6262.00043.04	Data cable
6262.00043.03	Digital screen
6262.00043.06	Tank prob
6230.00014.09	Contactora (DILEM 10)
6230.00014.14	Contactora (DILEM 12-01)
6232.00005.16	Magnetic switch
6262.00045.0818	Magnetic switch connection cable
6262.00043.02	Power box
2710.00501.34	Metal rod
6262.00024.01	Metal rod stopper
6262.00001.05	Door hinge metal part
6234.00001.80	Tank safety thermostat
2710.50111.B03	Heat Transfer Plate
6606.00001.12	Grommet rubber Ø8x16

Appas s.a.
since 1970
Professional Food Equipment & Stainless Steel Products

V 18.02



OPTIONAL

6262.00021.90

9099.DP020.052

9999.B08RE.00

2710.50108.B01

9740.D3REG.00

OPTIONAL

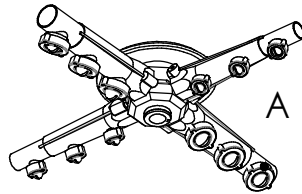
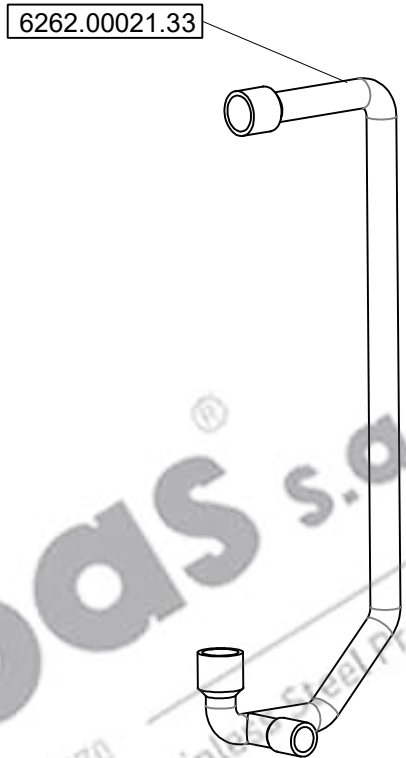
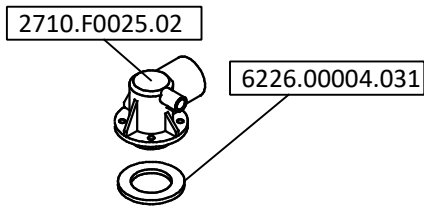
6262.00021.163

R&D	NAME	SIGNATURE	DATE	MATERIAL	VERSION NO
DRAWING	S. GURCU		30.04.2019		V 18.02
CONTROL	S. GURCU		30.04.2019		
CONSENT	M. HACI		30.04.2019	THICKNESS	REVISION
	MEASUREMENTS MILLIMETER		WEIGHT (gr.)	SCALE	PIC. NO
					PART NAME: OBY 40D PDRT DIGITAL GLASSWASHER DETAILS EXPLODED VIEW

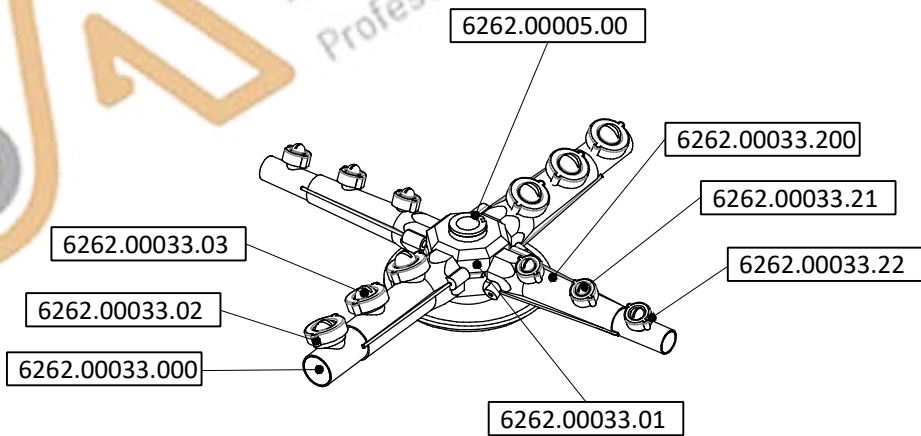
40D WASHING AND RINSING GROUP ITEMS

Item Code	Designation
2710.F0024.03	Connection Pipe for Bottom Nozzle
2710.F0025.02	Water inlet top
2710.50108.B01	Rinseaid&detergent dispenser holder plate
6221.00001.020	Hose clamp 12x20mm
6226.00004.03	Seal of Connection Pipe for Bottom Nozzle
6226.00004.031	Water inlet seal top
6262.00007.01	Pressure switch
6262.00008.00	Solenoid valve
6262.00021.07	Pressure switch connection hose
6262.00021.12	Water inlet hose
6262.00024.04	Nut of Connection Pipe for Bottom Nozzle
6262.00023.00	Suction filter lower part
6262.00023.01	Suction filter Nut
2710.00502.05	Suction filter top part
6226.00004.030	Suction Filter seal
6262.00021.51	Rinsing hose
6262.00033.31	Washing&Rinsing plastic arms(bottom)
6262.00033.32	Washing&Rinsing plastic arms(top)
6262.00057.11	Boiler tank
6262.30666.013	Rinse aid inlet check valve
6262.00021.052	Elbow reducing hose
6262.00021.47	Hose (water inlet valve-boiler)
9099.01000.01	Boiler heating resistance 3 kW
9099.ZF121.00	Washing pump
9740.D3REG.00	Detergent dispenser
9999.B08RE.00	Rinse aid dispenser
2KLP.460.626200041.03	Navel axle
2KLP.460.626200041.04	Screw
6262.00021.090	Hose (drain pump - Drain unit plastic part (bottom))
6262.00021.163	Drain hose
6262.00023.02	Drain unit plastic part (bottom)
6262.00023.03	Drain unit plastic part nut (bottom)
6262.00023.04	Drain plug
6226.00004.06	Drain unit plastic part seal
6262.00021.90	Hose
9099.DP020.052	Drain pump
6262.00043.05	Boiler prob
6262.00045.0819	Pressure switch connection cable

V 18.02



DETAIL-A



R&D	NAME	SIGNATURE	DATE	MATERIAL	VERSION NO		
DRAWING	S. GURCU		30.04.2019		V 18.02		
CONTROL	S.GURCU		30.04.2019				
CONSENT	M.HACI		30.04.2019				
			MEASUREMENTS MM.	THICKNESS	REVISION	PART NAME: OBY 40D PDRT DIGITAL GLASSWASHER DETAILS EXPLODED VIEW	
			WEIGHT (gr.)	SCALE	PIC. NO		

40D DETAILS ITEMS	
Item Code	Designation
6262.00005.00	Collector plastic part
6262.00033.000	Washing arm (without nut&nozzle)
6262.00033.01	Collector (washing&rinsing)
6262.00033.02	Washing arm nut
6262.00033.03	Washing arm nozzle
6262.00033.200	Rinsing arm (without nut&nozzle)
6262.00033.21	Rinsing arm nozzle
6262.00033.22	Rinsing arm nut
2710.F0025.02	Water inlet top
6226.00004.031	Water inlet seal top
6262.00021.33	Washing hose

