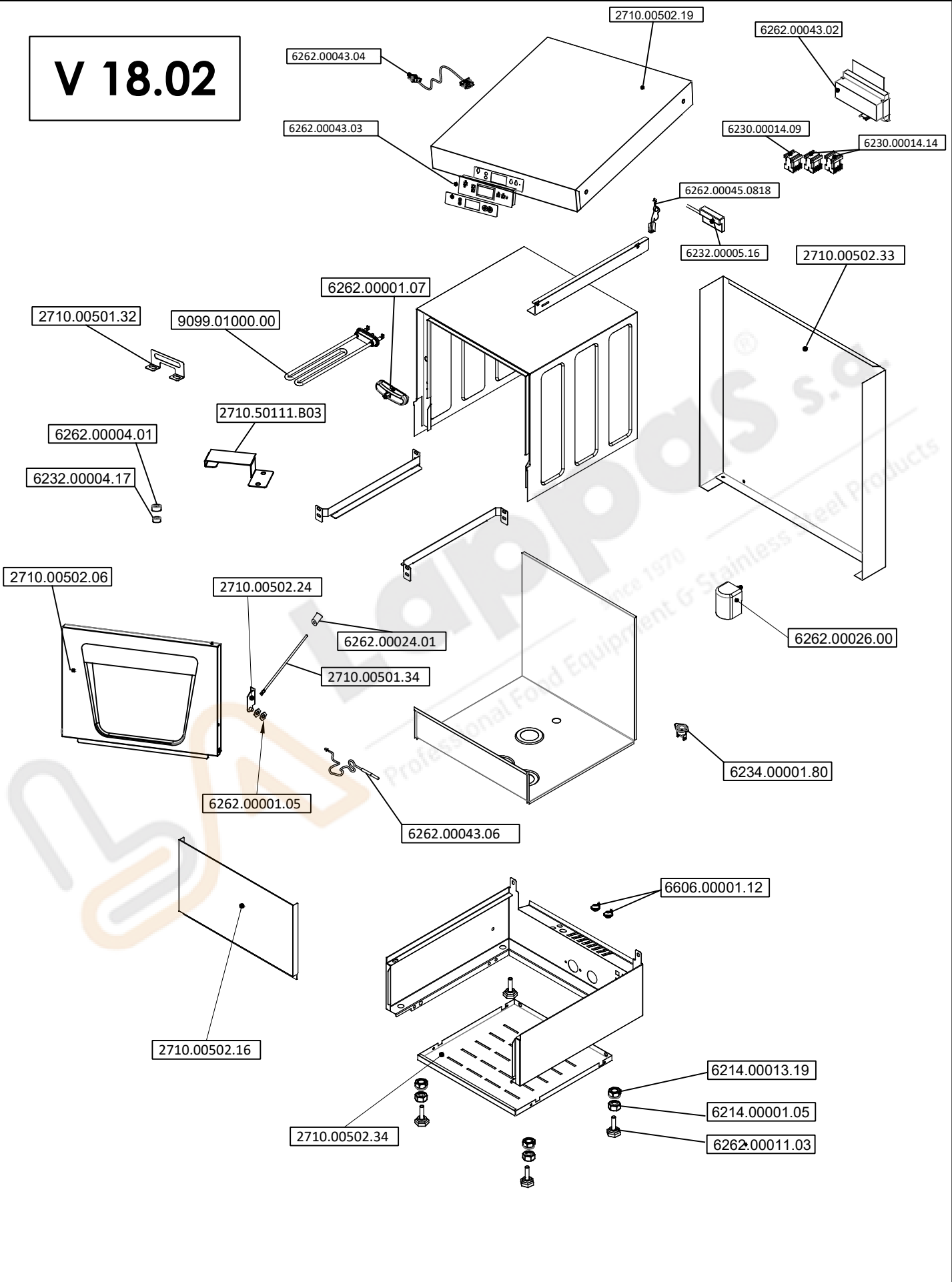


# V 18.02



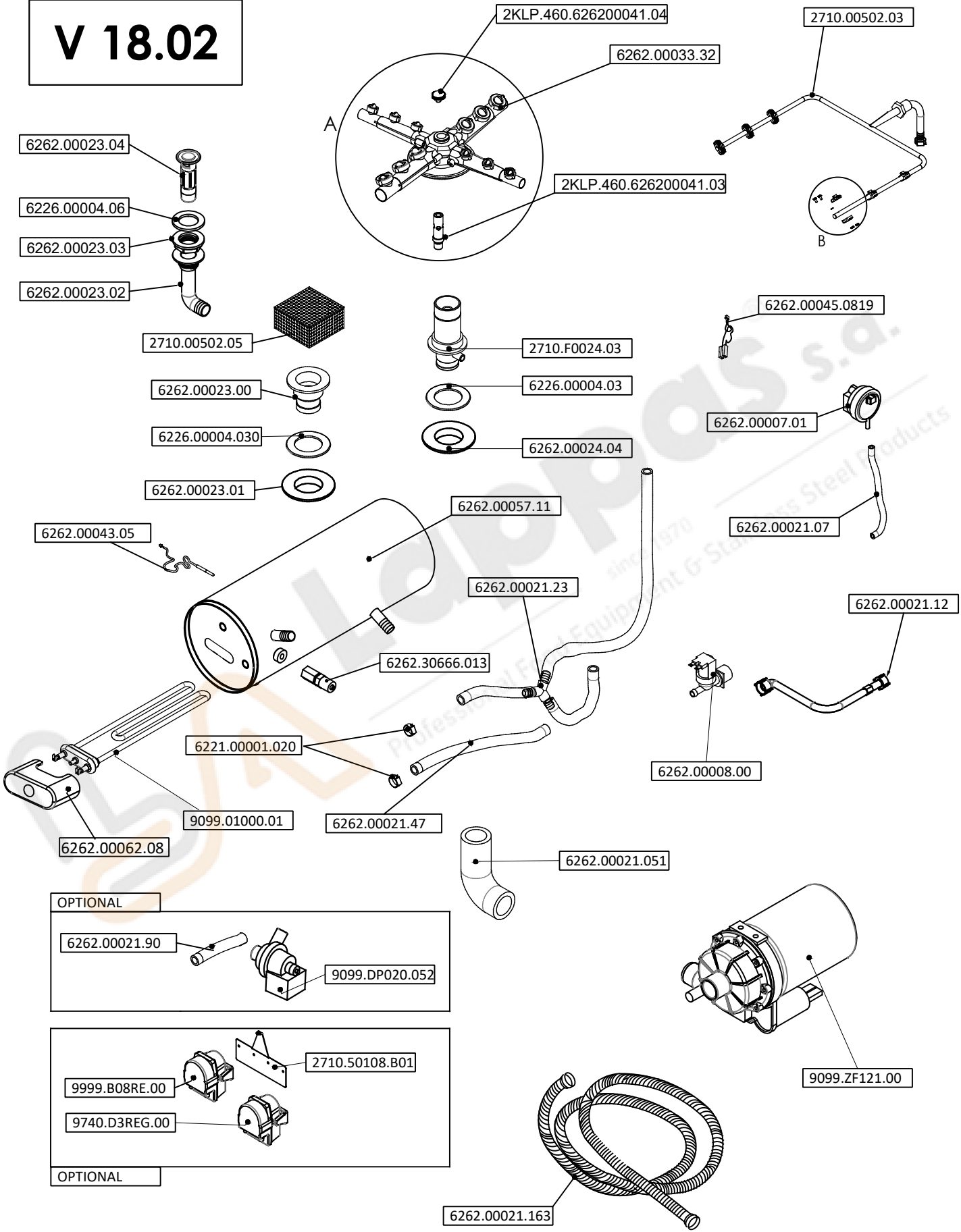
R&D	NAME	SIGNATURE	DATE	MATERIAL	VERSION NO		
DRAWING			30.04.2019		<b>V 18.02</b>		
CONTROL			30.04.2019				
CONSENT			30.04.2019	THICKNESS		REVISION	PART NAME: OBY 35D PDRT DIGITAL GLASSWASHER DETAILS EXPLODED VIEW
			MEASUREMENTS MILLIMETER	WEIGHT (gr.)	SCALE	PIC. NO	

**35D PDRT MECHANICAL GLASSWASHER  
DETAILS EXPLODED VIEW GROUP ITEMS**

<b>Item Code</b>	<b>Designation</b>
2710.00502.19	Top cover
2710.00502.33	Back panel
2710.00502.16	Lower front panel
2710.00502.34	Bottom panel
2710.00502.24	Door hinge
2710.00501.32	Resistance holding plate
6262.00001.07	Kit cover lock
6232.00004.17	Magnet
6262.00004.01	Magnet Cap
6262.00011.03	Adjustable feet
6214.00013.19	M10 nylon insert lock nut
6214.00001.05	M10 nut
6259.00003.111	Cable gland
6606.00001.12	Grommet rubber Ø8x16
6262.00019.21	Operating Label
2710.00502.06	Door Group
6262.00026.00	Air trap (Plastic)
9099.01000.00	Tank heating resistance
2710.50111.B03	Heat Transfer Plate
6262.00043.04	Data cable
6262.00043.03	Digital screen
6262.00043.06	Tank prob
6230.00014.09	Contactora (DILEM 10)
6230.00014.14	Contactora (DILEM 12-01)
6232.00005.16	Magnetic switch
6262.00045.0818	Magnetic switch connection cable
6262.00043.02	Power box
2710.00501.34	Metal rod
6262.00024.01	Metal rod stopper ( plastic )
6262.00001.05	Door hinge metal part
6234.00001.80	Tank safety thermostat


**S.p.a.s s.a.**  
 since 1970  
 Equipment & Stainless Steel Products

# V 18.02



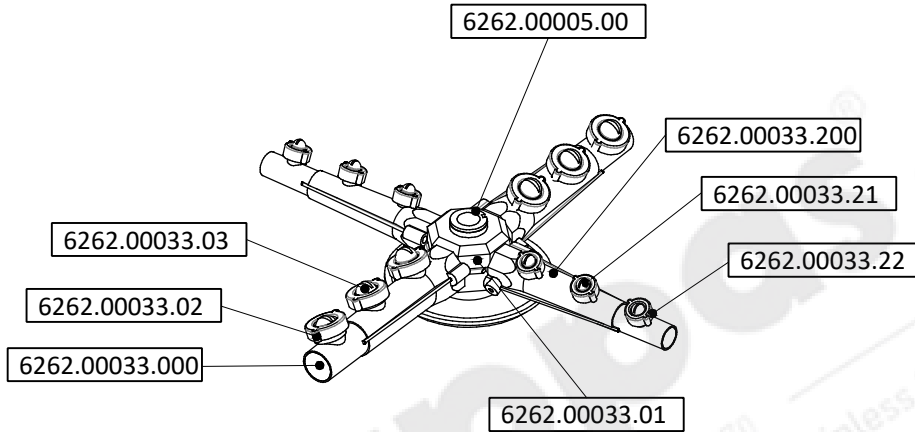
R&D	NAME	SIGNATURE	DATE	MATERIAL	VERSION NO	
DRAWING			30.04.2019		<b>V 18.02</b>	
CONTROL			30.04.2019			
CONSENT			30.04.2019			
				THICKNESS	REVISION	PART NAME: OBY 35D PDRT DIGITAL GLASSWASHER DETAILS EXPLODED VIEW
MEASUREMENTS MILLIMETER			WEIGHT (gr.)	SCALE	PIC. NO	

**35D PDRT MECHANICAL GLASSWASHER DETAILS EXPLODED VIEW  
GROUP ITEMS**

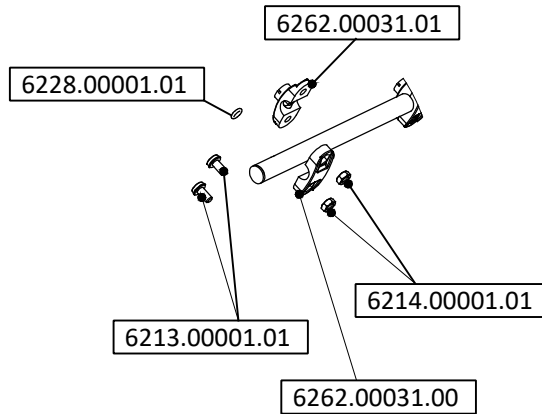
<b>Item Code</b>	<b>Designation</b>
2710.F0024.03	Connection Pipe for Bottom Nozzle
2710.50108.B01	Rinseaid&detergent dispenser holder plate
2710.00502.03	Rinsing arm
6221.00001.020	Hose clamp 12x20mm
6226.00004.03	Seal of Connection Pipe for Bottom Nozzle
6262.00007.01	Pressure switch
6262.00008.00	Solenoid valve
6262.00021.07	Pressure switch connection hose
6262.00021.12	Water inlet hose
6262.00024.04	Nut of Connection Pipe for Bottom Nozzle
6262.00023.00	Suction filter lower part
6262.00023.01	Suction filter Nut
2710.00502.05	Suction filter top part
6226.00004.030	Suction Filter seal
6262.00021.23	Rinsing hose
6262.00033.32	Washing&Rinsing plastic arms
6262.00057.11	Boiler tank
6262.30666.013	Rinse aid inlet check valve
6262.00021.051	Elbow reducing hose
6262.00021.47	Hose ( water inlet walve-boiler )
6262.00021.90	Hose ( Drain pump - Drain unit plastic part (bottom) )
9099.01000.01	Boiler heating resistance 3 kW
6262.00062.08	Washing tank heater cover
9099.ZF121.00	Washing pump
9740.D3REG.00	Detergent aid dispenser
9999.B08RE.00	Rinse aid dispenser
2KLP.460.626200041.03	Navel axle
2KLP.460.626200041.04	Screw
6262.000021.90	Hose ( drain pump - Drain unit plastic part (bottom) )
9099.DP020.052	Drain pump
6262.00043.05	Boiler prob
6262.00045.0819	Pressure switch connection cable
6262.00021.163	Drain hose
6262.00023.02	Drain unit plastic part (bottom)
6262.00023.03	Drain unit plastic part nut (bottom)
6262.00023.04	Drain plug
6226.00004.06	Drain unit plastic part seal

# V 18.02

## DETAIL-A



## DETAIL-B



R&D	NAME	SIGNATURE	DATE	MATERIAL	VERSION NO		
DRAWING			30.04.2019	<b>V 18.02</b>			
CONTROL			30.04.2019				
CONSENT			30.04.2019				
			MEASUREMENTS MM.	THICKNESS	REVISION	PART NAME: OBY 35D PDRT DIGITAL GLASSWASHER DETAILS EXPLODED VIEW	
			WEIGHT (gr.)		SCALE	PIC. NO	

**35D PDRT MECHANICAL GLASSWASHER DETAILS EXPLODED  
VIEW GROUP ITEMS**

<b>Item Code</b>	<b>Designation</b>
6262.00005.00	Collector plastic part
6262.00033.000	Washing arm (without nut&nozzle)
6262.00033.01	Collector (washing&rinsing)
6262.00033.02	Washing arm nut
6262.00033.03	Washing arm nozzle
6262.00033.200	Rinsing arm (without nut&nozzle)
6262.00033.21	Rinsing arm nozzle
6262.00033.22	Rinsing arm nut
6262.00031.00	Rinsing nozzle lower part
6262.00031.01	Rinsing nozzle top part
6228.00001.01	O-ring
6213.00001.01	Screw
6214.00001.01	Nut

