
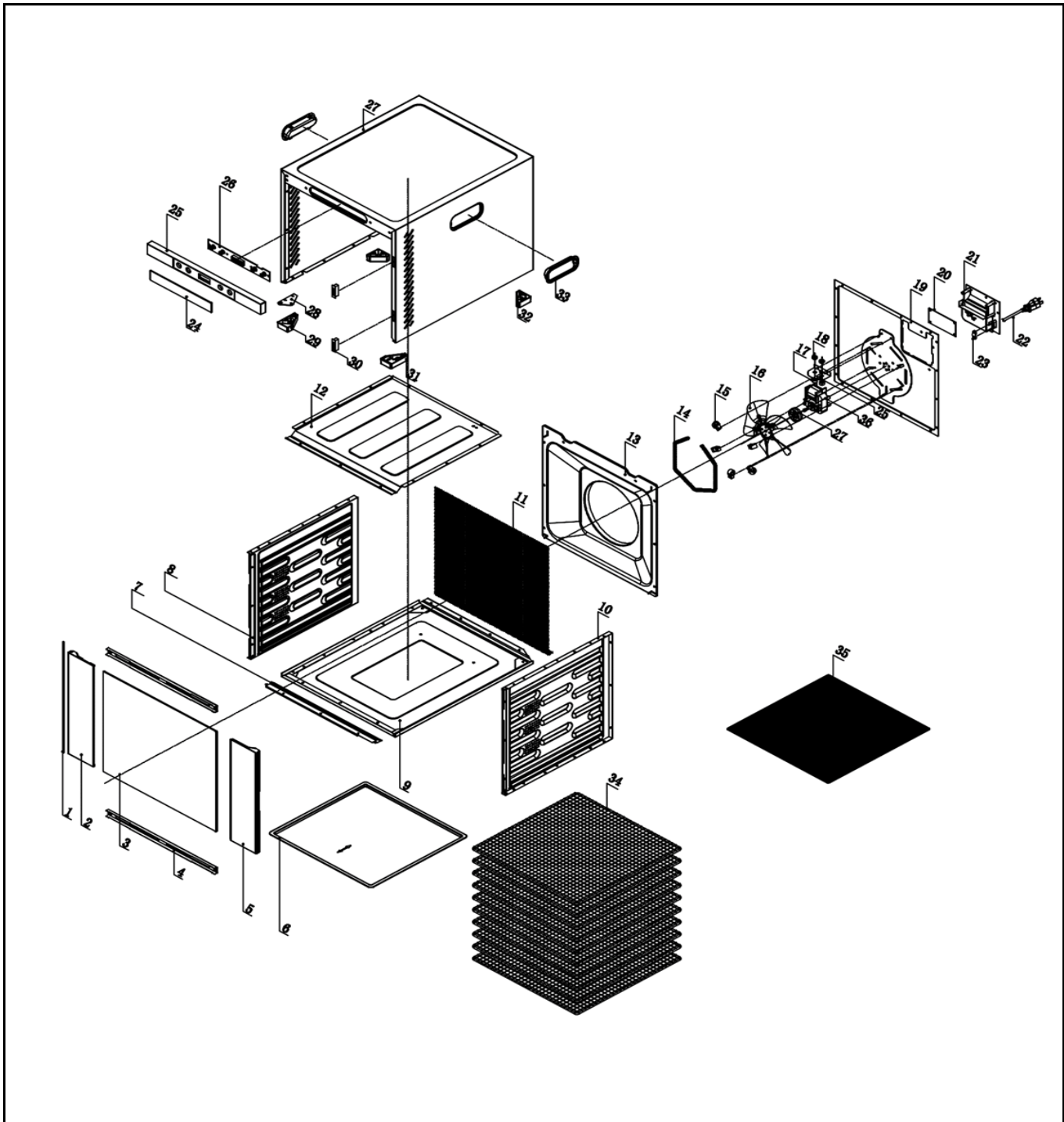



Drawing

 <p>Hendi B.V. Steenoven 21 3911 TX Rhenen The Netherlands</p>	Batch #	Appliance part#
	171973 and up	229026
	Description	
	Food dehydrator Profi Line	

Date	17-09-2018	Revision #	1.0
Revision	First Bill of Materials (BOM)		



Bill of materials (BOM)

 Hendi B.V. Steenoven 21 3911 TX Rhenen The Netherlands	Batch #	Appliance part#
	171973 and up	229026
	Description	
Food dehydrator Profi Line		


Date	17-09-2018	Revision #	1.0
Revision	First Bill of Materials (BOM)		

Item	Description	Part#	Quantity	Remark	Picture
1	Hinge pin	nss	1	Available as 946183	
2	Left door panel	nss	1	Available as 946183	
3	Door complete assembly	946183	1	Incl. item 1,2,3,4 and 5	
4	Bracket	nss	2	Available as 946183	
5	Right door panel	nss	1	Available as 946183	
6	Plastic driptray	946190	1		
7	Bracket	n/a	1		
8	Left side housing	n/a	1		
9	Bottom cover	n/a	1		
10	Right side housing	n/a	1		
11	Backside mesh housing	n/a	1		
12	Upper inner housing	n/a	1		
13	Air duct	n/a	1		
14	Heating element	946206	1		
15	Ceramic insulator	n/a	5		
16	Fan	n/a	1		
17	Ceramic ring 1	n/a	1		
18	Ceramic ring 2	n/a	1		
19	Back cover	n/a	1		
20	Main pcb	946213	1		
21	Power cord retention	nss	1	Available as 946220	
22	Power cord	946220	1	Incl. item 21,22 and 23	
23	Clamp	nss	1	Available as 946220	
24	Glass cover display	n/a	1		
25	Control Panel	n/a	1		
26	Display pcb	946237	1		
27	Housing	n/a	1		
28	Fixation plate	nss	1	Available as 946244	
29	Feet (set of 4 pcs)	946244	4	Incl. item 28,29,31 and 32	
30	Magnet	n/a	2		
31	Feet	nss	1	Available as 946244	
32	Feet	nss	2	Available as 946244	
33	Handle	nss	2		
34	Grid	946251			
35	Mesh (plastic)	946268			
36	Motor (Fan)	946275			

n/a -> not available

nss -> not sold separately

Circuit diagram

 HENDI FOOD SERVICE EQUIPMENT Hendi B.V. Steenoven 21 3911 TX Rhenen The Netherlands	Batch #	Appliance part#
	171973 and up	229026
	Description	
	Food dehydrator Profi Line	

Date	17-09-2018	Revision #	1.0
Revision	First Bill of Materials (BOM)		

Not available.